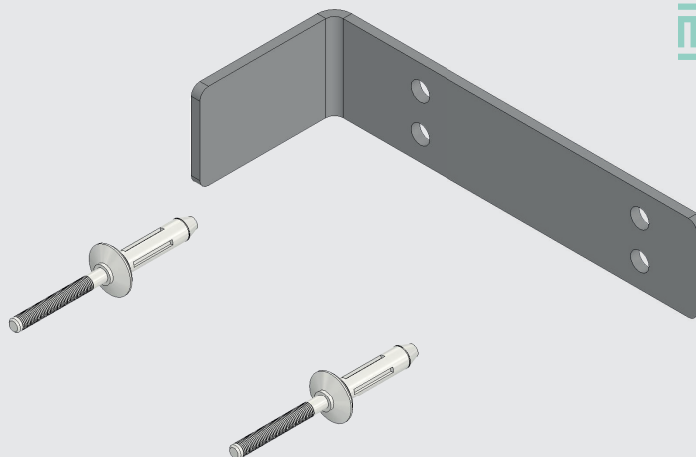


Manual Alu angle bracket

In this manual we show the installation method of the Alu angle bracket. The use of this bracket is only necessary if the solar panels are installed in stages.

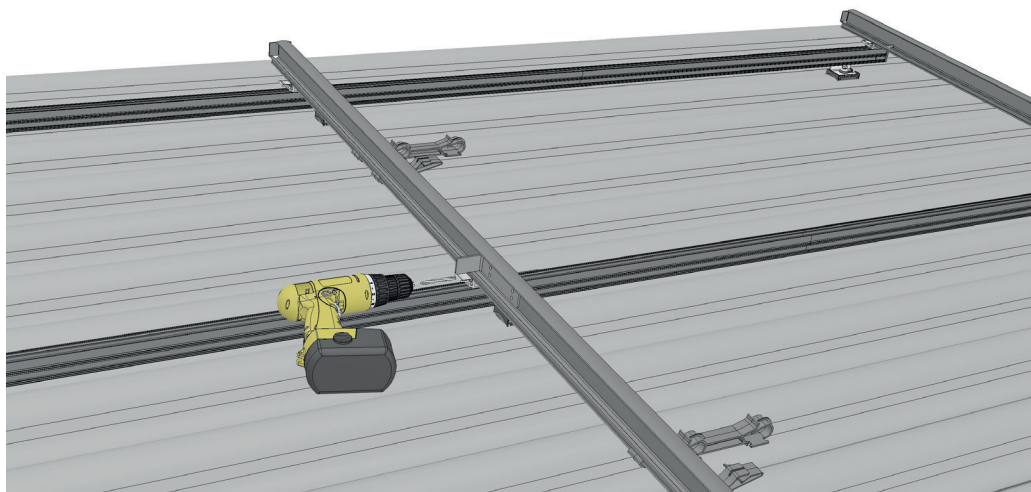
The article number of the Alu angle bracket is 20153.



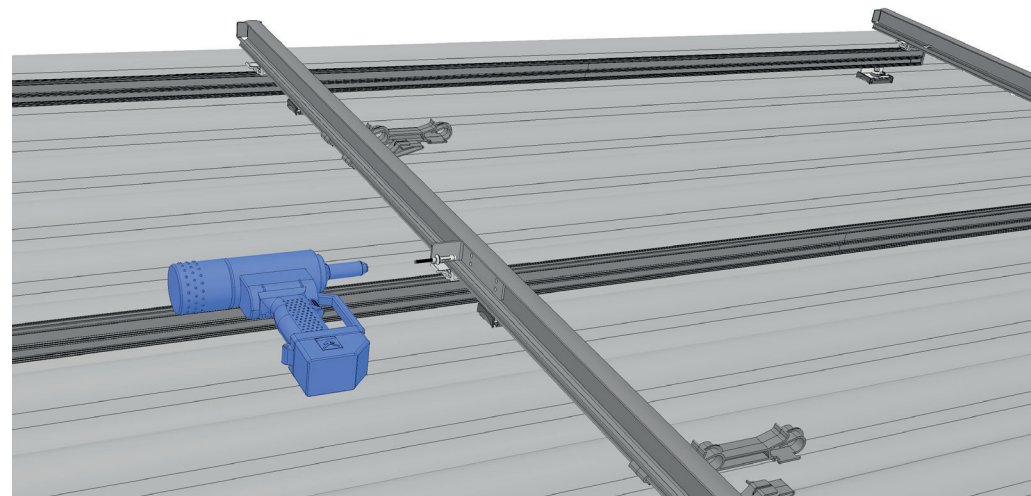
1. Make sure the solar panels around the place where the Alu angle bracket is placed are removed.



2. Place the Alu right-angle bracket at the bottom of the IP insert profile where the last solar panel with return is placed.



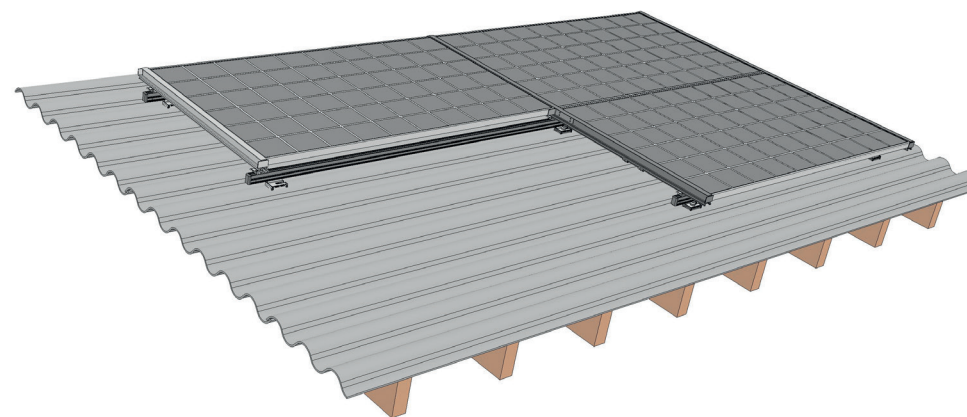
- 3.** Two holes now need to be drilled first. Use the Alu angle bracket as a template for this. Use one of the two holes. Drilling should be done with a steel drill size 6.5



- 4.** Rivet the Alu angle bracket into the pre-drilled holes. Use the two supplied pop rivets for mounting. The rivets are mounted using the rivet pliers. It is important to use a rivet nosepiece for the IMS-Solar sealing rivets.



- 5.** The assembly is now complete.



- 6.** The solar panels can be put back in place.