

# Cheetah Dual 60H 325-345 Watt

## MONOCRYSTALLINE MODULE

Positive power tolerance of 0~+3%

ISO9001:2015、ISO14001:2015、OHSAS18001  
certified factory.

IEC61215、IEC61730 certified products.



PERC



## KEY FEATURES



### PID Resistance:

Excellent Anti-PID performance guarantee limited power degradation for mass production.



### Higher Lifetime Power Yield:

0.5% annual power degradation  
30 year linear power warranty



### Saving BOS Cost:

Designed for high voltage systems of up to 1500 VDC, saving BOS cost



### Improved Durability and Reliability:

Dual glass reduces micro-cracking, snail trails, corruptions caused by moisture, sand, salt mist, acid, alkali, etc.



### Less Maintenance Requirement:

Reduced soiling and requires less maintenance and enhances fire safety



### Aesthetically Pleasing Design:

White encapsulation material maximizes module efficiency up to 20.23% (60-mono max. output 345W); Transparent EVA increases light transmission, ideal for installations requiring light to pass through

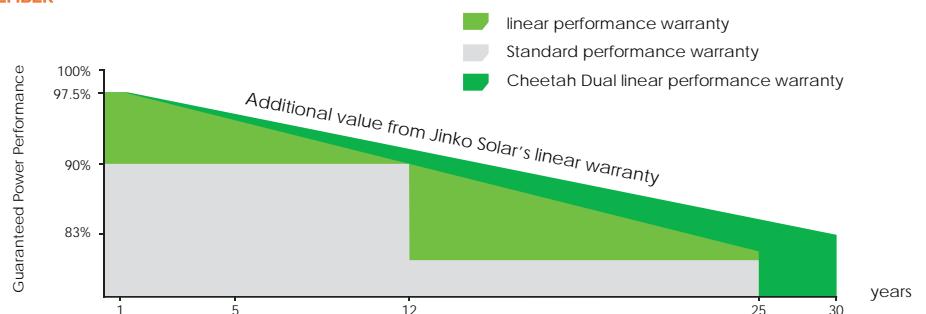


### Strengthened Mechanical Support:

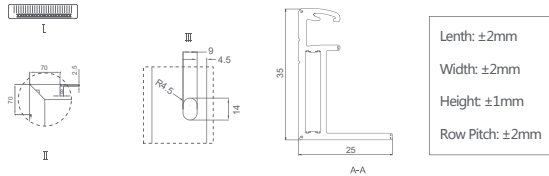
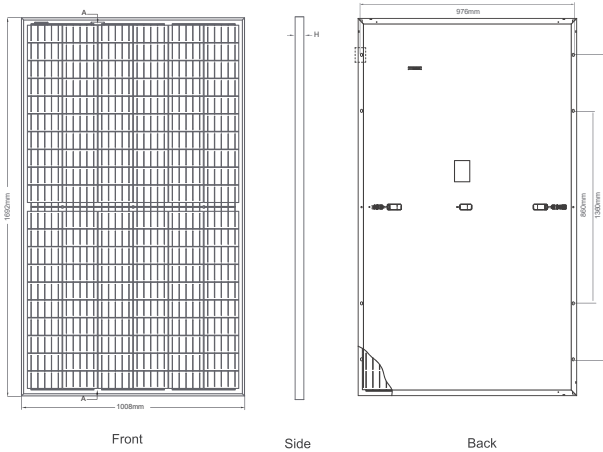
5400 Pa snow load, 2400 Pa wind load

## LINEAR PERFORMANCE WARRANTY

12 Year Product Warranty • 30 Year Linear Power Warranty  
0.5% Annual Degradation Over 30 years



## Engineering Drawings

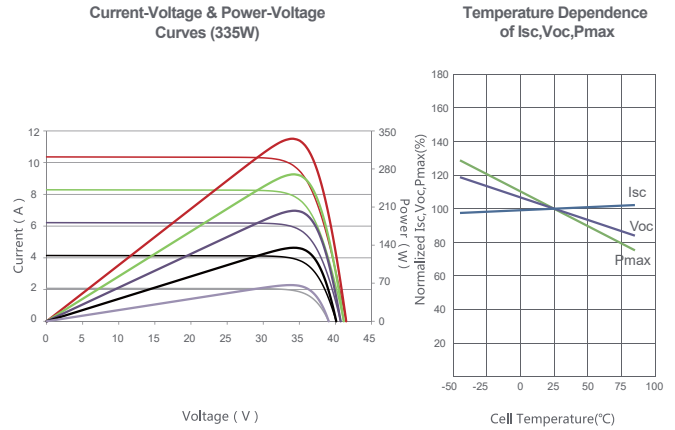


## Packaging Configuration

(Two pallets = One stack)

30pcs/pallets, 60pcs/stack, 780pcs/ 40'HQ Container

## Electrical Performance & Temperature Dependence



## Mechanical Characteristics

|               |                                                                           |
|---------------|---------------------------------------------------------------------------|
| Cell Type     | Mono PERC 158.75×158.75mm                                                 |
| No. of cells  | 120 (12×10)                                                               |
| Dimensions    | 1692x1008x35mm (66.62x39.69x1.38 inch)                                    |
| Weight        | 26.5kg (58.43 lbs)                                                        |
| Front Glass   | 2.5mm, High transmission, Antireflection coating, heat strengthened glass |
| Back Glass    | 2.5mm heat strengthened glass                                             |
| Junction Box  | IP67 Rated                                                                |
| Output Cables | TUV 1×4.0mm <sup>2</sup><br>(+): 250mm, (-): 150mm or customized length   |

## SPECIFICATIONS

| Module Type                               | JKM325M-60H-DV |       | JKM330M-60H-DV |       | JKM335M-60H-DV |       | JKM340M-60H-DV |       | JKM345M-60H-DV |       |
|-------------------------------------------|----------------|-------|----------------|-------|----------------|-------|----------------|-------|----------------|-------|
|                                           | STC            | NOCT  | STC            | NOCT  | STC            | NOCT  | STC            | NOCT  | STC            | NOCT  |
| Maximum Power (Pmax)                      | 325Wp          | 242Wp | 330Wp          | 246Wp | 335Wp          | 250Wp | 340Wp          | 253Wp | 345Wp          | 257Wp |
| Maximum Power Voltage (Vmp)               | 33.6V          | 31.6V | 33.8V          | 31.8V | 34.0V          | 32.0V | 34.2V          | 32.2V | 34.4V          | 32.4V |
| Maximum Power Current (Imp)               | 9.68A          | 7.66A | 9.77A          | 7.74A | 9.87A          | 7.82A | 9.96A          | 7.86A | 10.04A         | 7.94A |
| Open-circuit Voltage (Voc)                | 41.1V          | 38.0V | 41.3V          | 38.2V | 41.5V          | 38.4V | 41.7V          | 38.6V | 41.9V          | 38.8V |
| Short-circuit Current (Isc)               | 10.20A         | 8.54A | 10.31A         | 8.65A | 10.36A         | 8.74A | 10.55A         | 8.86A | 10.64A         | 8.97A |
| Module Efficiency STC (%)                 | 18.92%         |       | 19.21%         |       | 19.50%         |       | 19.79%         |       | 20.23%         |       |
| Operating Temperature(°C)                 | -40°C~+85°C    |       |                |       |                |       |                |       |                |       |
| Maximum system voltage                    | 1500VDC (IEC)  |       |                |       |                |       |                |       |                |       |
| Maximum series fuse rating                | 20A            |       |                |       |                |       |                |       |                |       |
| Power tolerance                           | 0~+3%          |       |                |       |                |       |                |       |                |       |
| Temperature coefficients of Pmax          | -0.36%/°C      |       |                |       |                |       |                |       |                |       |
| Temperature coefficients of Voc           | -0.28%/°C      |       |                |       |                |       |                |       |                |       |
| Temperature coefficients of Isc           | 0.048%/°C      |       |                |       |                |       |                |       |                |       |
| Nominal operating cell temperature (NOCT) | 45±2°C         |       |                |       |                |       |                |       |                |       |

\* STC: Irradiance 1000W/m<sup>2</sup> Cell Temperature 25°C

AM=1.5

NOCT: Irradiance 800W/m<sup>2</sup> Ambient Temperature 20°C

AM=1.5

Wind Speed 1m/s

\* Power measurement tolerance: ± 3%